

FIGURES AND TABLES

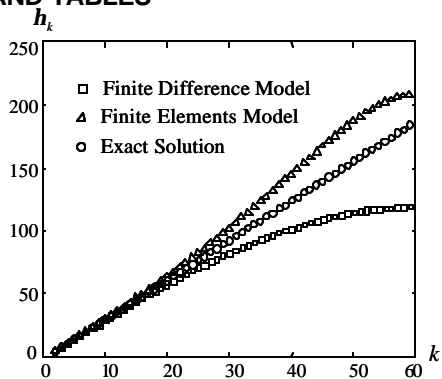


Figure 1. Predicted natural frequencies using Finite Difference Model, Finite Element Model and Exact Solution for 60-degree-of-freedom model.

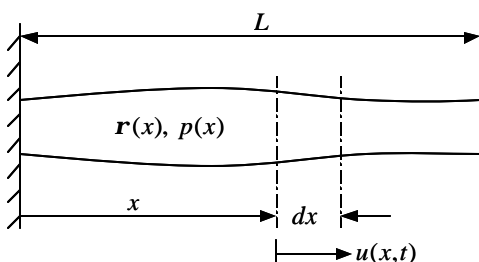


Figure 2. Non-uniform axially vibrating rod.

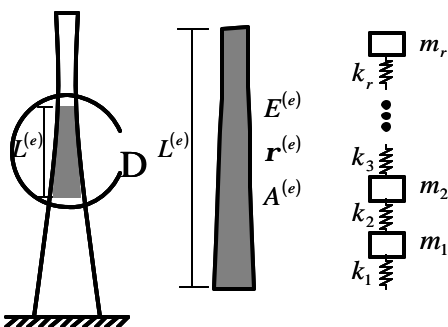


Figure 3. An r-degree-of-freedom element

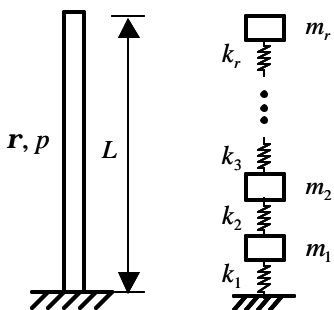


Figure 4. An rth order spectral conforming element model

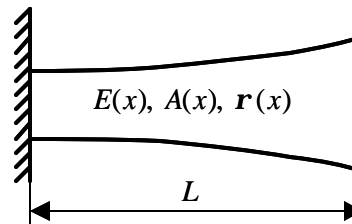


Figure 5. Exponential rod

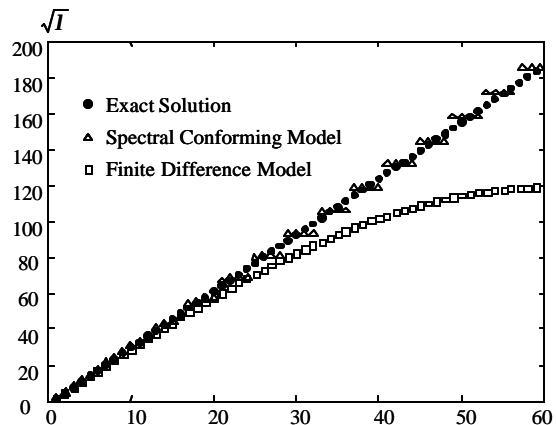


Figure 6. Predicted natural frequencies using Finite Difference Model, Spectral Conforming Model and Exact Solution.

ACKNOWLEDGMENTS

The research work presented here is supported by a National Science Foundation research grant CMS-9978786.

REFERENCES

1. D. Boley and G.H. Golub, A survey of matrix inverse eigenvalue problem, *Inverse Problems*, Vol. 3, pp. 595-622, 1987.
2. C. de Boor and G.H. Golub, The numerically stable reconstruction of a Jacobi matrix from spectral data, *Linear Algebra and Its Application*, Vol. 21, pp. 245-260, 1978.
3. F.P. Gantmakher and M.G. Krein, *Oscillation Matrices and Kernels and Small Vibration of Mechanical Systems*, State Publishing House for Technical-Theoretical Literature, Moscow-Leningrad, 1961 (Translation: US Atomic Energy Commission, Washington DC).
4. J. Paine, A numerical method for the inverse Sturm-Liouville problem, *SIAM J. Sci., Stat. Comput.*, Vol. 5, pp. 149-156, 1984.
5. J.W. Paine, F. de Hoog and R.S. Anderssen, On the correction of finite difference eigenvalue approximations for Sturm-Liouville problems, *Computing*, Vol. 26, pp. 123-139, 1981